

S-WING WEAR STRIP FITTING INSTRUCTIONS

Kit contains:

- 1 x Instruction
- 2 x S-Wing Wear Strip

Items you will require that are not included:
Tape measure
Lubricant e.g. Silicon or similar
Scissors or Craft Knife

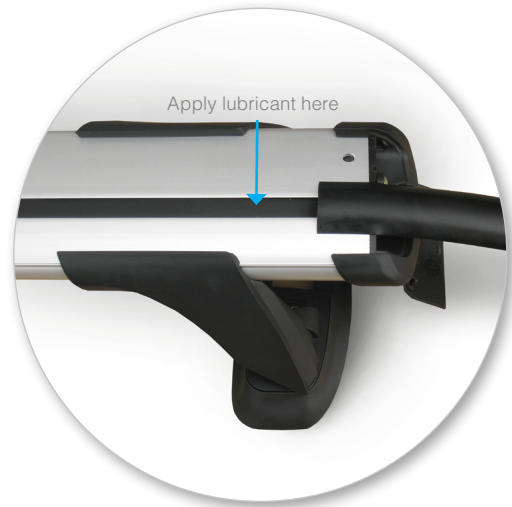
Remove parts from box & check
Contact your Prorack dealer if any parts are missing or
damaged

Important Note:

S-Wing Through Bar pictured in these instructions,
also applicable for a Flush Bar



- Open endcap or remove cover
- Depress the rubber infill



- Apply lubricant along top surface of rubber infill
- Insert rubber wear strip into T-slot over depressed rubber infill and push
- May require two people, one to push, other to pull



- Ensure rubber wear strip end meets with endcap or cover



- Cut other end as required (*Ensure endcap can be closed*)
- Close endcap or replace cover